

# INSTALLATION INSTRUCTIONS

DESCRIPTION: UMAX Side Nerf Bar Kit  
 PART NUMBER: J0G-F11E0-V0  
 MODEL: '18~ UMAX (all)



## ⚠ WARNING

Please read and understand these instructions completely before installation to avoid possible injury, or damage to the accessory or vehicle.

## NOTICES:

This installation should be performed by an authorized Yamaha dealer or other qualified technician. Check the kit for missing or damaged components before beginning installation.

## WARRANTY INFORMATION:

In the United States, see your dealer for a copy of the Yamaha Golf Car Parts and Accessories Limited Warranty Statement.

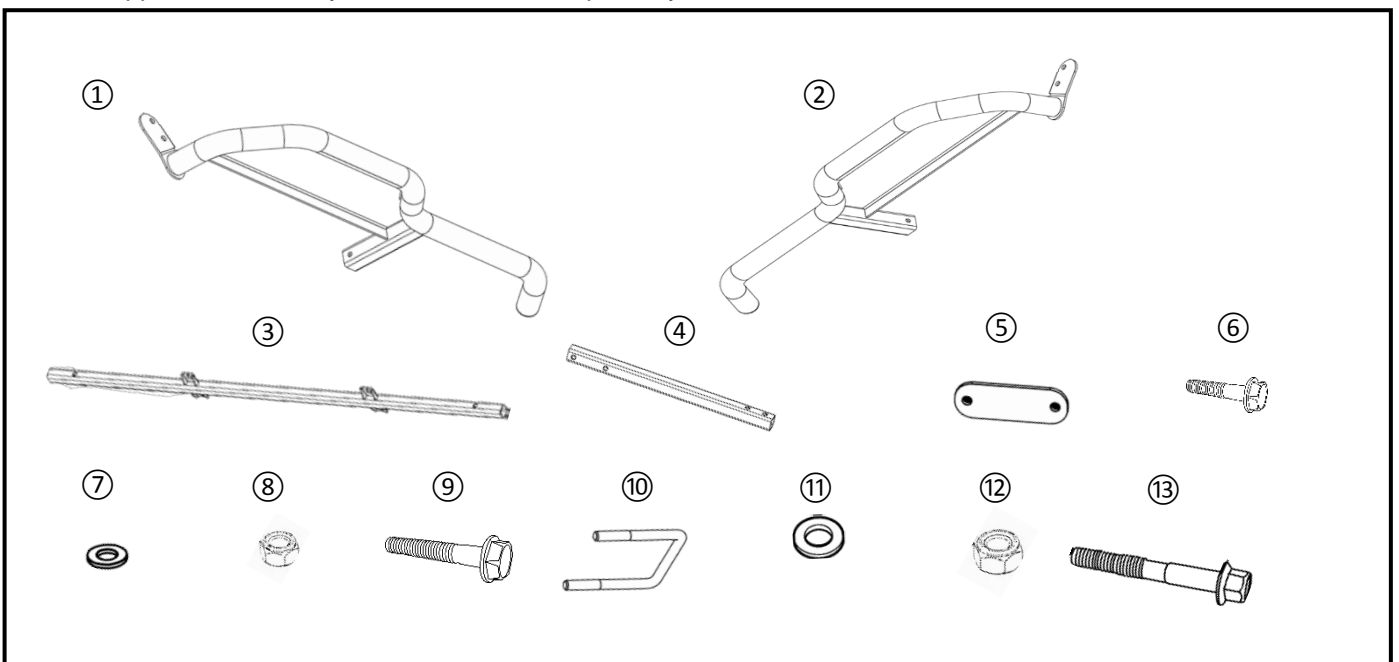
## DEALER OR INSTALLER:

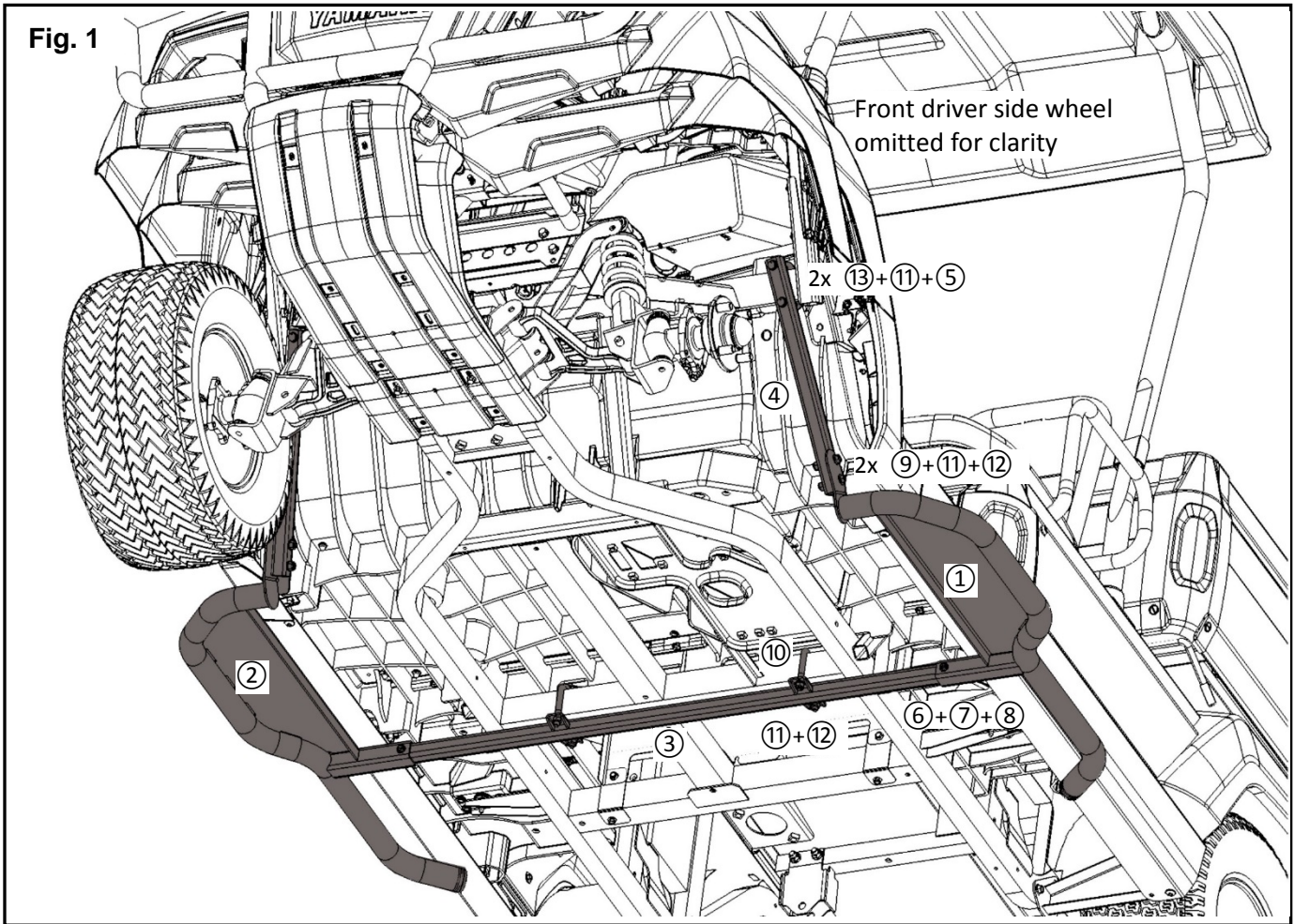
These instructions contain important information for future reference and *must* be given to the customer.

## PARTS LIST:

No.	Part Number	Description	Qty
--	J0G-F11E0-V0	UMAX Side Nerf Bar Kit	--
①	J0G-F11E3-V0	Nerf Bar, Left	1
②	J0G-F11E3-T0	Nerf Bar, Right	1
③	J0G-F845S-T0	Center Cross Bar	1
④	J0G-F1560-V0	Vertical Support	2
⑤	J0G-F1539-V0	Nut Plate	2
⑥	95812-06040	M6x40mm Hex Flange Bolt	2
⑦	92902-06200	M6 Washer	2
⑧	95612-06100	M6 Nylok® Nut	2
⑨	95812-08040	M8x40mm Hex Head Flange Bolt	4
⑩	J0G-F3394-V0	M8 U-bolt	2
⑪	92902-08200	M8 Washer	12
⑫	95612-08100	M8 Nylok® Nut	8
⑬	97017-08065	M8x65mm Hex Head Bolt	4

\* Part supplied with kit only and not available separately.





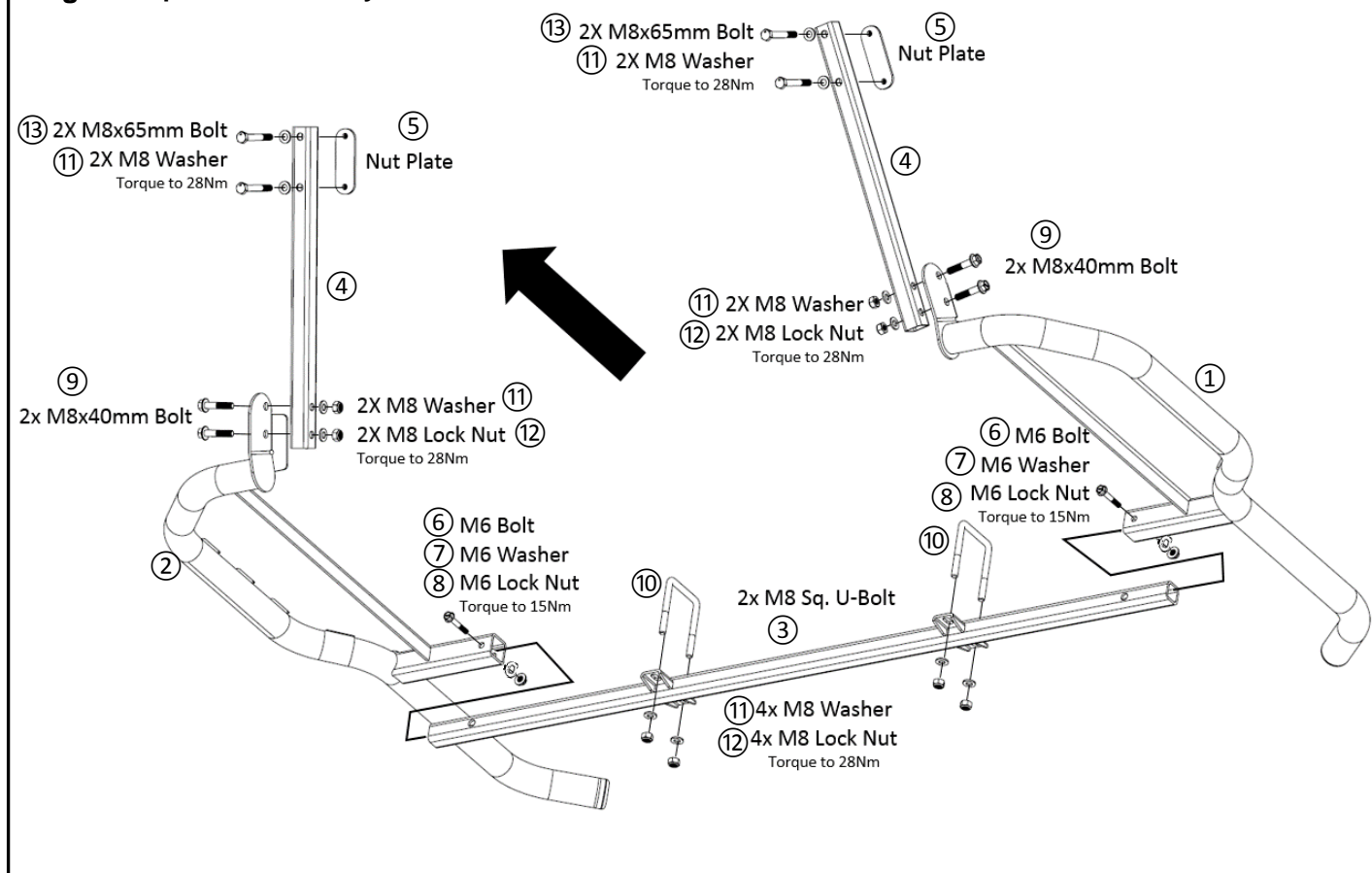
### PREPARATION:

- Place vehicle on a secure and level surface.
- Turn main switch “OFF” and set parking brake.
- Set run/tow switch to “TOW” (electric) or use “Safety Lockout Procedure” (gas).
- Clean all mount surfaces.

### INSTALLATION:

1. Place ⑩ U-Bolts in openings in floorboards as shown in Fig. 1.
2. Install ③ Center Cross Bar to ⑩ U-bolts with ⑪ M8 washer and ⑫ M8 Nylok® nuts. Do not tighten at this time. **Note:** cross bar is not symmetric. The side with the mounting tab closest to the end of the bar installs to the driver side.
3. Install one of ④ Vertical Supports to the ① Nerf Bar, Left as shown in Fig. 1 and Fig. 2 with two M8 bolts, washers, and nuts.
4. Install the ① Nerf Bar, Left to the ③ Center Cross Bar and loosely fasten with ⑥ M6 x40mm Bolt, ⑦ M6 Washer, and a ⑧ M6 Nylok® Nut.
5. Fasten upper end of the ④ Vertical Support to the frame in the wheel well with two ⑬ M8x65mm bolts, ⑪ two ⑪ M8 Washers, and a ⑤ Nut Plate.
6. Repeat for right side.

**Fig. 2 Exploded Assembly**



7. Torque all fasteners to these values:

- M8 = 28Nm (21 Ft-lbf)
- M6 = 15Nm (11 ft-lbf)

**CARE AND CLEANING:**

Clean Nerf Bars with a clean soft cloth and mild soap and water. Rinse and dry. Do not use abrasive cloth or harsh chemicals.

**STORAGE:**

Allow to dry completely before storing. Store out of direct sunlight and extreme temperatures in a clean, cool, dry location free from humidity fluctuation.

**CUSTOMER SERVICE:**

Please contact your Yamaha dealer for support questions.

**ESTIMATED TIME TO INSTALL: 0.5 HRS**